

# simalube® – the automatic single-point lubricator



Technical information for the maritime industry



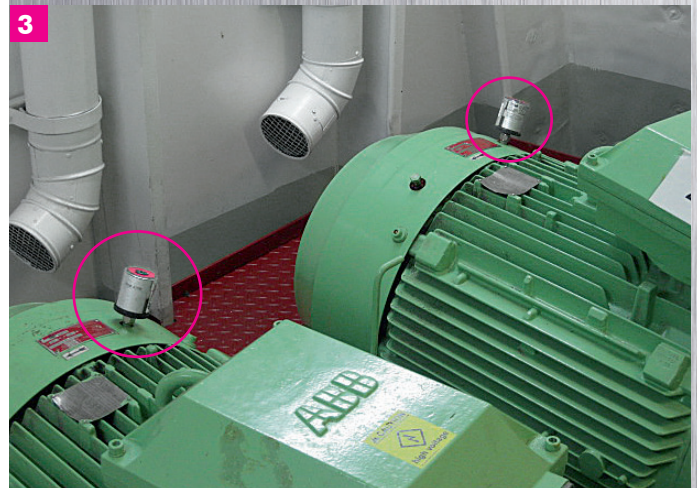
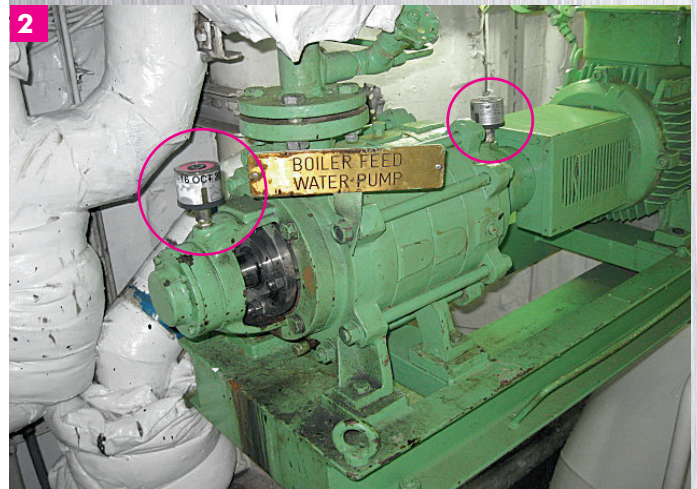
**simalube**®  
smart lubrication

# The lubrication expert

## Increased operational safety on ships thanks to simalube®

The demand for technical reliability is significantly higher on a ship than in a vehicle on land: lasting performance in a rough environment (high stress from vibration, high salt content in the air, etc.) and a long lifespan are essential. **simalube®** lubricators help fulfill these exacting demands. They automatically and continuously lubricate not only ball bearings in motors and pumps, but also chains, wire cables, guides, toothed gears, swiveling mechanisms, and more. Through the reliable care of the mechanical components with lubricant, disruptions and breakdowns can be avoided. **simalube®** greatly reduces maintenance efforts and costs.

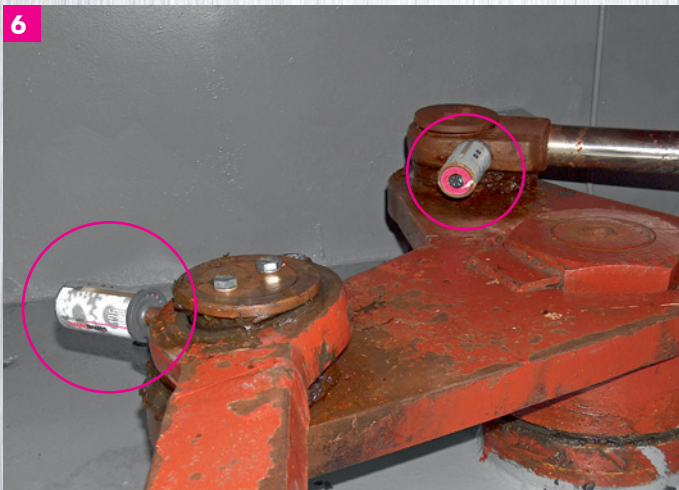
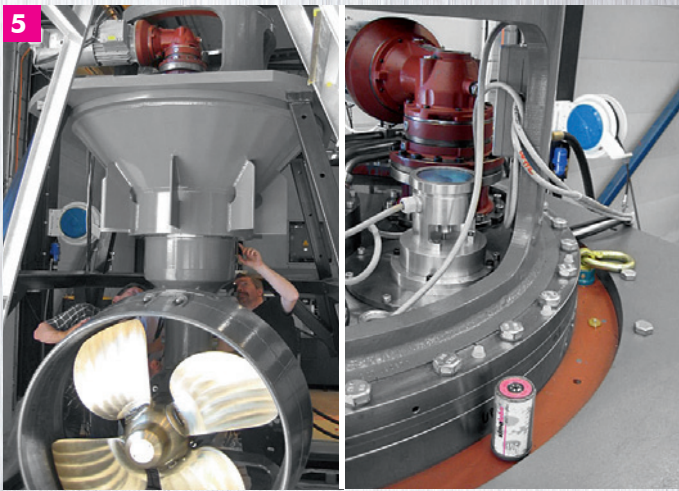
«Long lifespan and low maintenance costs for ships thanks to reliable, continuous lubrication with simalube®»



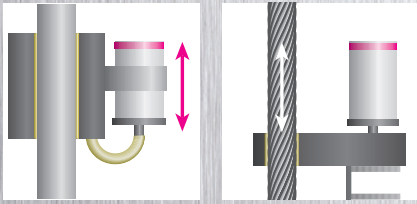
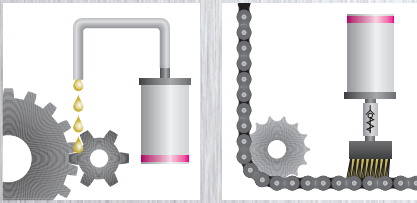
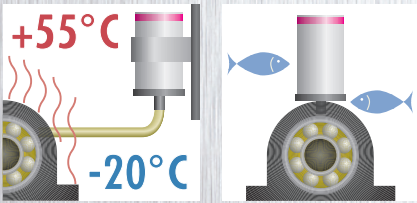
## «simalube® replaces manual lubrication»

### Reliable lubrication

**simalube®** lubricators are ideal for use in hard-to-reach areas. The lubricators also automatically and reliably care for exposed lubrication points. With **simalube®**, regular manual lubrication of machines is no longer necessary.



- 1 The **simalube®** 125 ml lubricates the swivel mechanism for a life boat
- 2 **simalube®** 30 ml are installed on the water pumps of the boiler
- 3 The ABB electric motors are fitted with 60 ml **simalube®** lubricators
- 4 The water pump is automatically lubricated. The lubricant travels from the attached simalube to the lubrication point through a flexible tube
- 5 A **simalube®** 125 ml seals the thruster so that no water can enter
- 6 The steering wheel is lubricated with two 125 ml lubricators
- 7 The **simalube®** lubricator continuously oils chains, even in tight spaces. Additionally, the brush cleans the chain
- 8 The **simalube®** elevator system cares for the guide rails. It protects the rails with a uniform oil film and cleans it at the same time. The **simalube®** elevator brush is installed directly onto the cabin roof or on the guiding shoe
- 9 Three 125 ml **simalube®** lubricators with brush applications both lubricate and clean the cable



## Applications and advantages

### simalube® applications on ships:

- Ventilator drives and bearings
- Pump motors and seals
- Compressors
- Waste incineration systems
- Elevators/escalators
- Cranes/swivel mechanisms
- Waste water systems
- Laundry and purification systems
- Distillation systems
- Fire protection systems
- Chains and steel cables

### Advantages of the simalube® lubrication system:

- Proven lubrication system in the maritime industry
- Reduction of service requirements and maintenance costs: because manual lubrication is no longer necessary, less labour is required and time-savings are great
- Decrease in corrosion-related failures
- Shutting down the machines for maintenance is no longer necessary
- Longer service life of machines
- Flexible: the running time is adjustable for 1–12 months
- Only one type of lubricator is needed per application. This reduces storage costs
- Once the simalube is installed, the lubrication point is reliably lubricated and never forgotten
- Thanks to the transparent housing, the progress of the lubrication process can be monitored at all times (fill level control)
- Simple, environmentally-friendly disposal (100% recyclable)
- The hermetically sealed system prevents contamination by dust and debris (IP68)
- Available in 5 sizes: 15, 30, 60, 125, and 250 ml, plus multipoint



We will gladly provide you with information about the application of **simalube®** products in the maritime industry.

Our specialists have a highly-qualified technical knowledge and can show you how automatic lubrication can reduce costs and extend the life of your machines.

#### simatec ag

Stadthof 2  
CH-3380 Wangen a. Aare

Tel.: +41 (0)32 636 50 00

Fax: +41 (0)32 636 50 19

welcome@simatec.com

www.simatec.com

**simatec**  
smart technologies